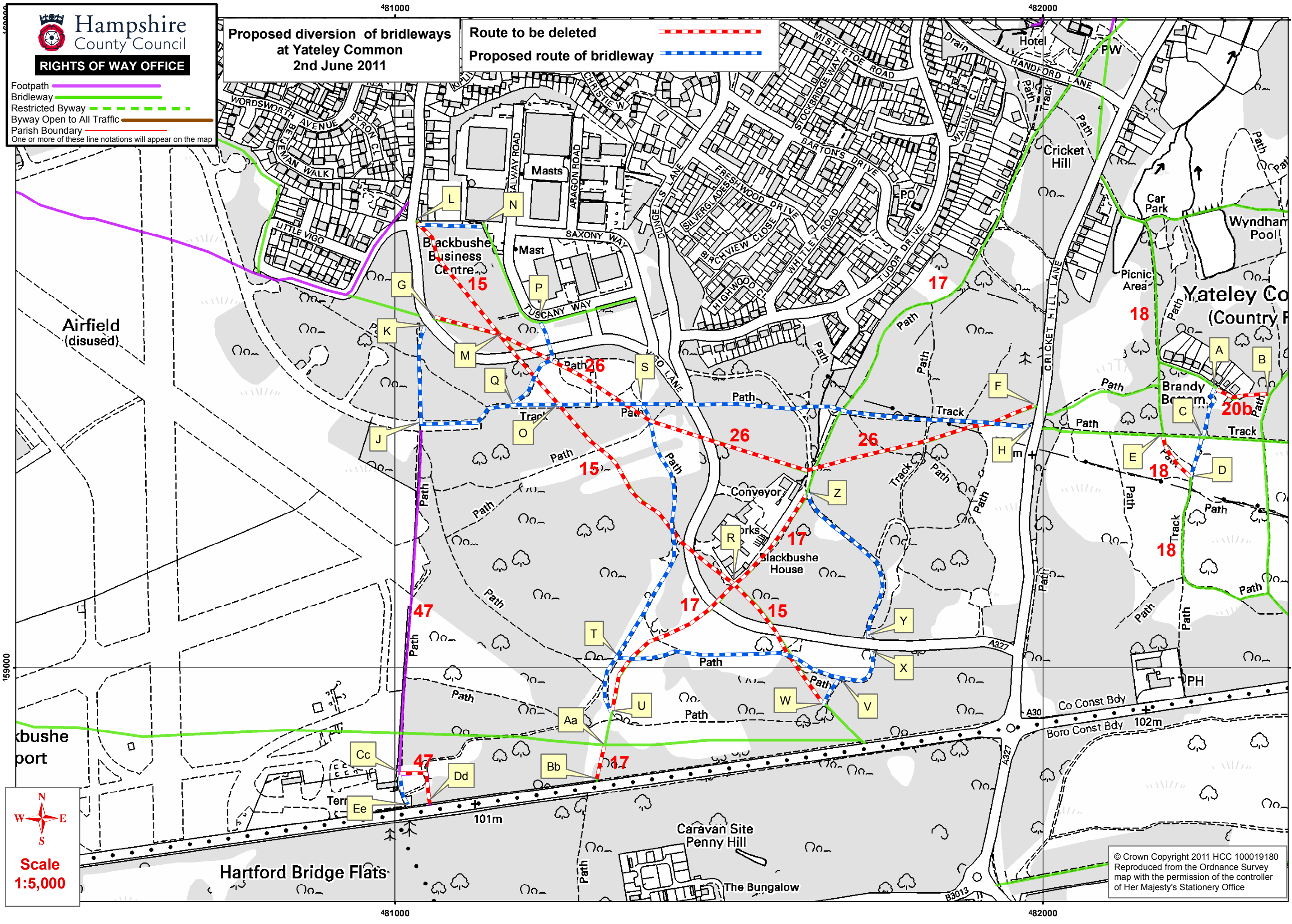


- Footpath —
 - Bridleway —
 - Restricted Byway - - -
 - Byway Open to All Traffic —
 - Parish Boundary —
- One or more of these line notations will appear on the map

**Proposed diversion of bridleways
at Yateley Common
2nd June 2011**

Route to be deleted - - -
Proposed route of bridleway - - -



N
W E
S

**Scale
1:5,000**

© Crown Copyright 2011 HCC 100019180
Reproduced from the Ordnance Survey
map with the permission of the controller
of Her Majesty's Stationery Office